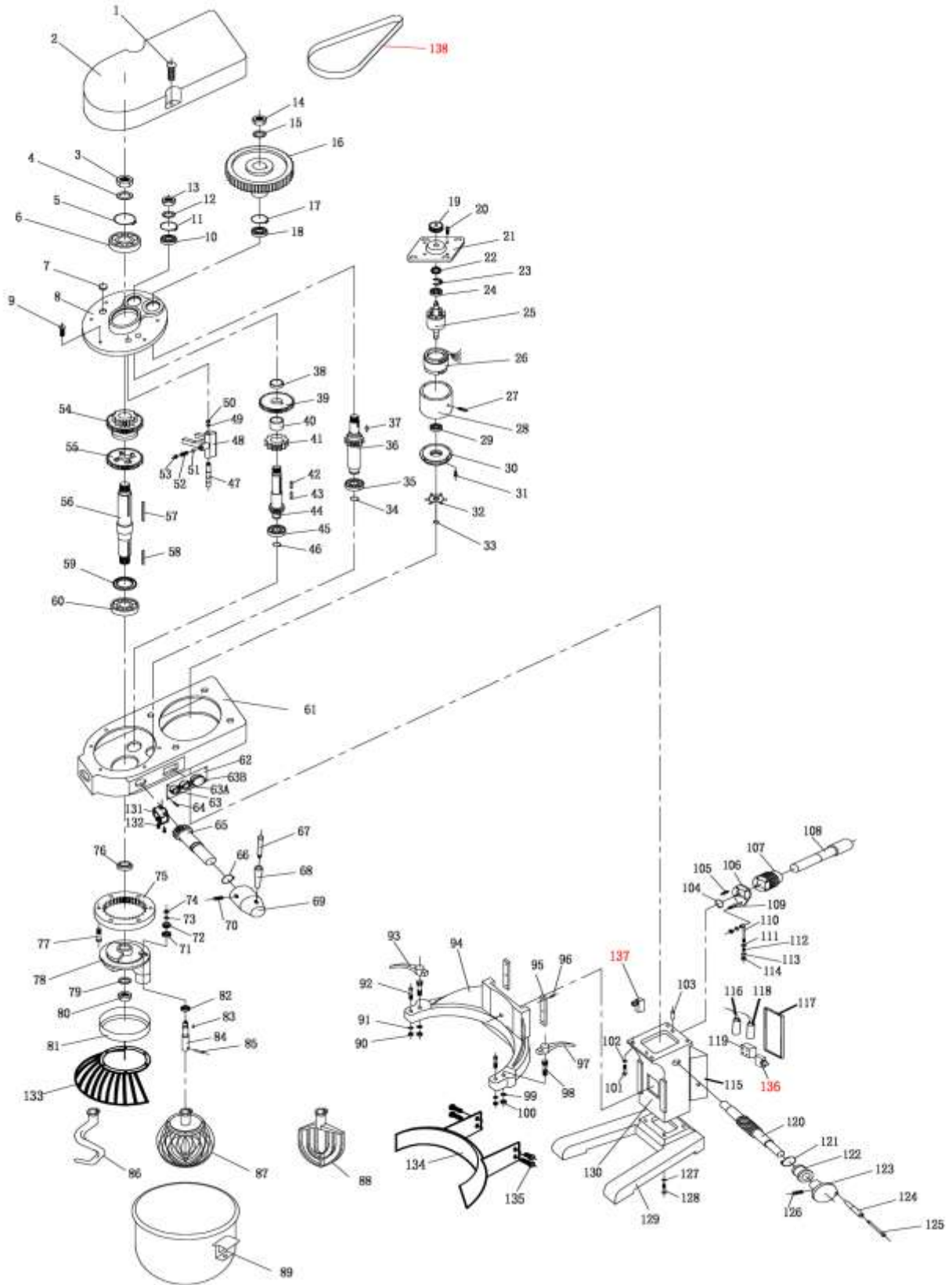


МИКСЕР ПЛАНЕТАРНЫЙ HURAKAN HKN-IP40FM


МИКСЕР ПЛАНЕТАРНЫЙ HURAKAN HKN-IP40FM

| Поз | Наименование детали | | | | |
|-----|-----------------------------|-----|-------------------------|-----|-----------------------|
| 1 | Screw M6X110 | 58 | Dowel 8X55 | 113 | Washer 12 |
| 2 | Cover | 59 | Oil seal 38X58X12 | 114 | Nut M12 |
| 3 | Nut M22X1.5 | 60 | Bearing 6207 | 115 | Screw M4X8 |
| 4 | Washer 22 | 61 | Case | 116 | Capacitor 200UF |
| 5 | Circlip for hole D62 | 62 | Label | 117 | Screw M6X15 |
| 6 | Bearing 6206 | 63 | Switch | 118 | Capacitor 35UF |
| 7 | Oil-lide cover | 63A | Tap button switch | 119 | Plate |
| 8 | Box cover | 63B | Emergency stop switch | 120 | Worm shaft |
| 9 | Screw M6X25 | 64 | Screw M5X8 | 121 | Snap spring D30 |
| 10 | Bearing 6204 | 65 | Shift gear | 122 | Locating sleeve |
| 11 | Circlip for hole D47 | 66 | Snap spring D20 | 123 | Hand wheel |
| 12 | Washer 26 | 67 | Shift level handle core | 124 | Hand wheel handle |
| 13 | Nut M16X1.5 | 68 | Shift level handle | 125 | Core shaft |
| 14 | Nut M16X1.5 | 69 | Shift level seat | 126 | Screw M8X16 |
| 15 | Washer 16 | 70 | Screw M8X16 | 127 | Spring washer 12 |
| 16 | Synchronous belt wheel Z=68 | 71 | Bearing 6205 | 128 | Screw M12X45 |
| 17 | Circlip for hole D47 | 72 | Planetary gear Z=22 | 129 | Footing |
| 18 | Bearing 6204 | 73 | Washer 16 | 130 | Guide pillar |
| 19 | Synchronous belt wheel Z=13 | 74 | Nut M16X1.5 | 131 | Micro switch |
| 20 | Screw M5X20 | 75 | Ring gear Z=70 | 132 | Screw M4X25 |
| 21 | Front Cover | 76 | Spacer Sleeve | 133 | Protective guard |
| 22 | Centrifugal switch | 77 | Screw M6X255 | 134 | Fixed crash barrier |
| 23 | Bottom plate | 78 | Planetary gear holder | 135 | Screw M4X25 |
| 24 | Bearing 6205 | 79 | Washer 22 | 136 | Overload protector |
| 25 | Rotor | 80 | Nut M22X1.5 | 137 | Lift micro switch |
| 26 | Stator | 81 | Ring | 138 | Synchronous belt 300L |
| 27 | Fastening screw M6X15 | 82 | Bearing 6006 | | |
| 28 | Motor shell | 83 | Dowel 8X18 | | |
| 29 | Bearing 6205 | 84 | Stir shaft | | |
| 30 | Bake Cover | 85 | Straidht pin 10X30 | | |
| 31 | Screw M5X20 | 86 | Dough mixer | | |
| 32 | Motor fan | 87 | Stirred ball | | |
| 33 | Snap spring D15 | 88 | Agitator | | |
| 34 | Snap spring D20 | 89 | Charging barrel | | |
| 35 | Bearing 6204 | 90 | Nut M8 | | |
| 36 | Input shaft Z=13 | 91 | Ring washer 8 | | |
| 37 | Dowel 6X30 | 92 | Anchor Pin | | |
| 38 | Spacer Sleeve | 93 | Lock handle | | |
| 39 | Gear Z=34 | 94 | Barrell holder | | |
| 40 | Spacer Sleeve | 95 | Flat clamp | | |
| 41 | Gear Z=24 | 96 | Screw M8X16 | | |
| 42 | Dowel 6X20 | 97 | Lock handle | | |
| 43 | Dowel 6X20 | 98 | Locking pin | | |
| 44 | Second motion shaft Z=15 | 99 | Washer 12 | | |
| 45 | Bearing 6204 | 100 | Nut M12 | | |
| 46 | Snap spring D20 | 101 | Screw M12X35 | | |
| 47 | Fork Shaft | 102 | Ring washer 12 | | |
| 48 | Shift fork | 103 | Straight Pin 8X16 | | |
| 49 | Ring washer 10 | 104 | Snap spring D14 | | |
| 50 | Nut M10 | 105 | Screw M8X20 | | |
| 51 | Steel ball D8 | 106 | Worm wheel splint | | |
| 52 | Posicioning spring | 107 | Lifting gear | | |
| 53 | Screw M10X20 | 108 | Lifting worm shaft | | |
| 54 | Double gear Z=27,37 | 109 | Screw hook | | |
| 55 | Gear Z=46 | 110 | Lifeing hook | | |
| 56 | Output shaft (3) | 111 | Washer 12 | | |
| 57 | Dowel 10X115 | 112 | Spring | | |